



1 Snowy Court Corio VIC

3 1 2

This family home is positioned in a sought after real estate growth corridor of Geelong. The quiet court location just walking distance to the Corio Village shopping centre, schools and public transport this home is a must to inspect.

Key attributes

- * Garage / Workshop
- * Perfect for commuters
- * Walking distance to schools, public transport and shops
- * 3 good size Bedrooms all with Built in robes
- * Reverse cycle heating and cooling
- * Land size approx. 684m²

Price : \$490,000-\$510,000

Land Size : 684 sqm

View : <https://www.mayfieldrealestate.com.au/sale/vic/geelong-district/corio/residential/house/7928686>

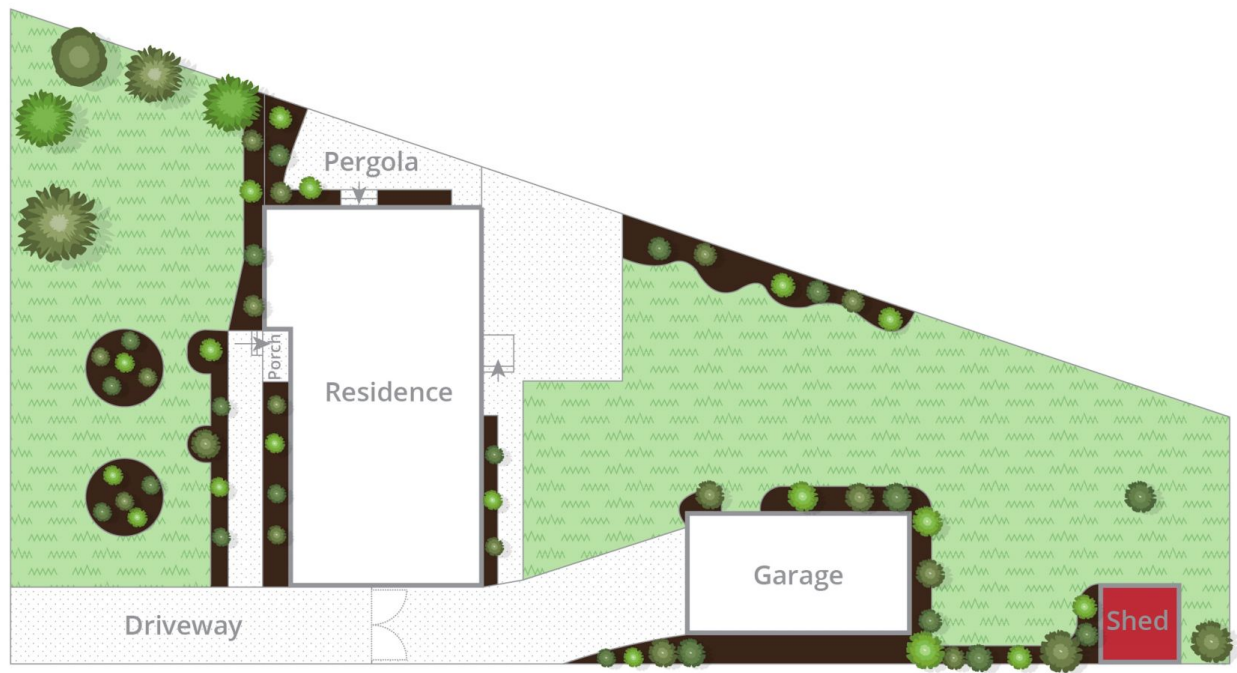


Mark Mayfield
03 5272 1288



Whilst bwrm.com.au has made every attempt to ensure the accuracy of the floor plan contained here, measurements are approximate and no responsibility is taken for any error, omission, or mis-statement. This plan is for illustrative purposes only.

1 Snowy Court, Corio



Site Plan

Whilst bwrm.com.au has made every attempt to ensure the accuracy of the floor plan contained here, measurements are approximate and no responsibility is taken for any error, omission, or mis-statement. This plan is for illustrative purposes only.

1 Snowy Court, Corio