



282 Latrobe Terrace Newtown VIC

5 2 2

This character filled home lies awaiting its next chapter, for a new family to enjoy and to become part of the rich history of this grand residence.

Circa 1870 this home was designed by the prominent Geelong and Western District architects, Alexander Davidson, and George Henderson.

Serving as a much-loved family home for the past 40 years, now it is your chance to acquire this impressive home in this tightly held, sought after real estate pocket and one of Geelong's most exclusive suburbs.

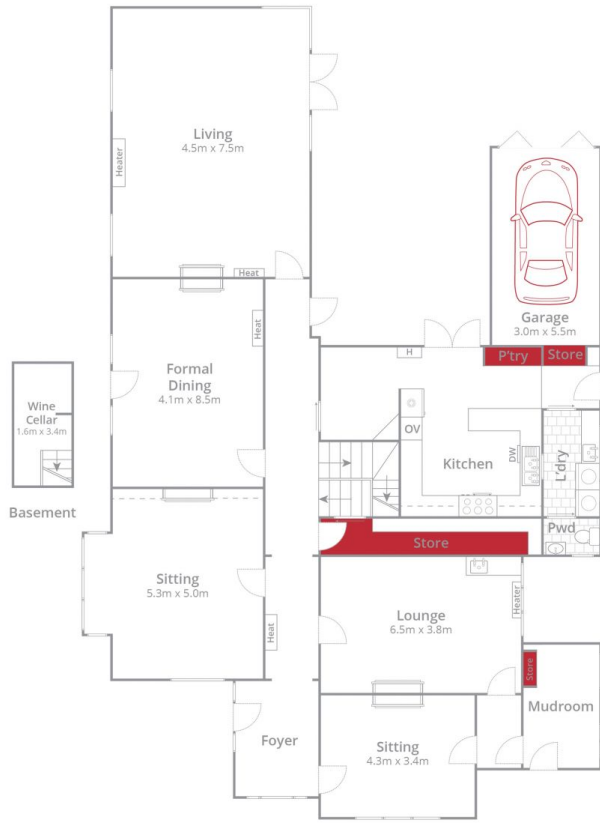
Ground level

- ? Formal dining room with open fireplace
- ? Formal sitting room with boxed bay window and open fireplace
- ? Informal sitting room with superb leadlight window and marble fireplace

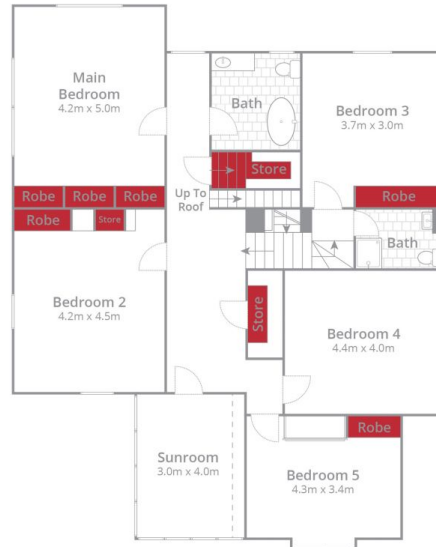
Price : \$1,450,000 - \$1,490,000
Land Size : 587 sqm
View : <https://www.mayfieldrealestate.com.au/sale/vic/geelong-district/newtown/residential/house/7717955>



Mark Mayfield
03 5272 1288



Ground Floor



First Floor

Whilst bwr.com.au has made every attempt to ensure the accuracy of the floor plan contained here, measurements are approximate and no responsibility is taken for any error, omission, or mis-statement. This plan is for illustrative purposes only.

282 Latrobe Terrace, Newtown



Site Plan

Whilst bwrn.com.au has made every attempt to ensure the accuracy of the floor plan contained here, measurements are approximate and no responsibility is taken for any error, omission, or mis-statement. This plan is for illustrative purposes only.

282 Latrobe Terrace, Newtown

