



305 Boundary Road St Albans Park VIC

3 1 2

Situated in a sought after real estate growth corridor of Geelong, this charming home is a must to inspect. Upon entering you are greeted with wide hall which flows through to a spacious on trend front lounge room with reverse cycle heating and cooling while at the rear of the home lies the light filled open plan kitchen/ meals area. Three good sized bedrooms are serviced by the central bathroom. The secure large rear yard with garage and workshop completes the picture. The home is situated close to the local shops, public transport and schools.

Key attributes

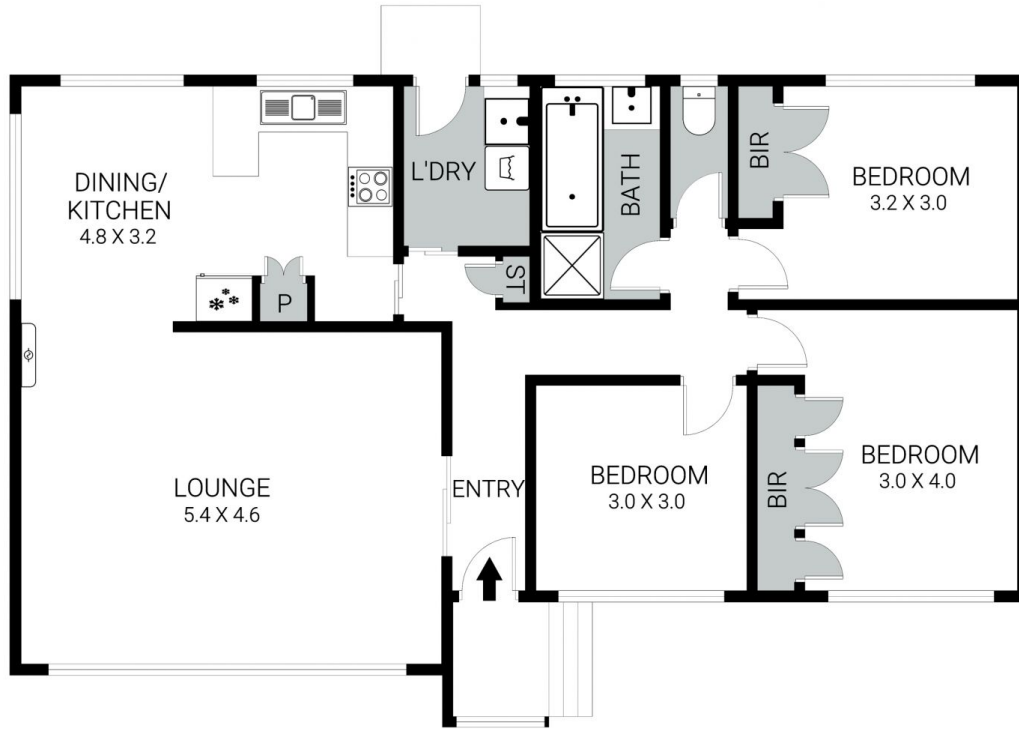
- * Large Garage / Workshop
- * 5kw solar system
- * Quality window furnishings

[For full version visit the website](https://www.mayfieldrealestate.com.au/sale/vic/geelong-district/st-albans-park/residential/house/7700131)

Type : House
Land Size : 592 sqm
View : <https://www.mayfieldrealestate.com.au/sale/vic/geelong-district/st-albans-park/residential/house/7700131>



Mark Mayfield
 03 5272 1288



Disclaimer: Please note plans are indicative only and not drawn to exact scale. All dimensions & locations are approximate. Potential buyers should view the property in person.
Plan by ABODE Productions - www.abodeproductions.com.au