



**1/11 Ashbourne Street Street Herne Hill VIC**

**3** **2** **2**

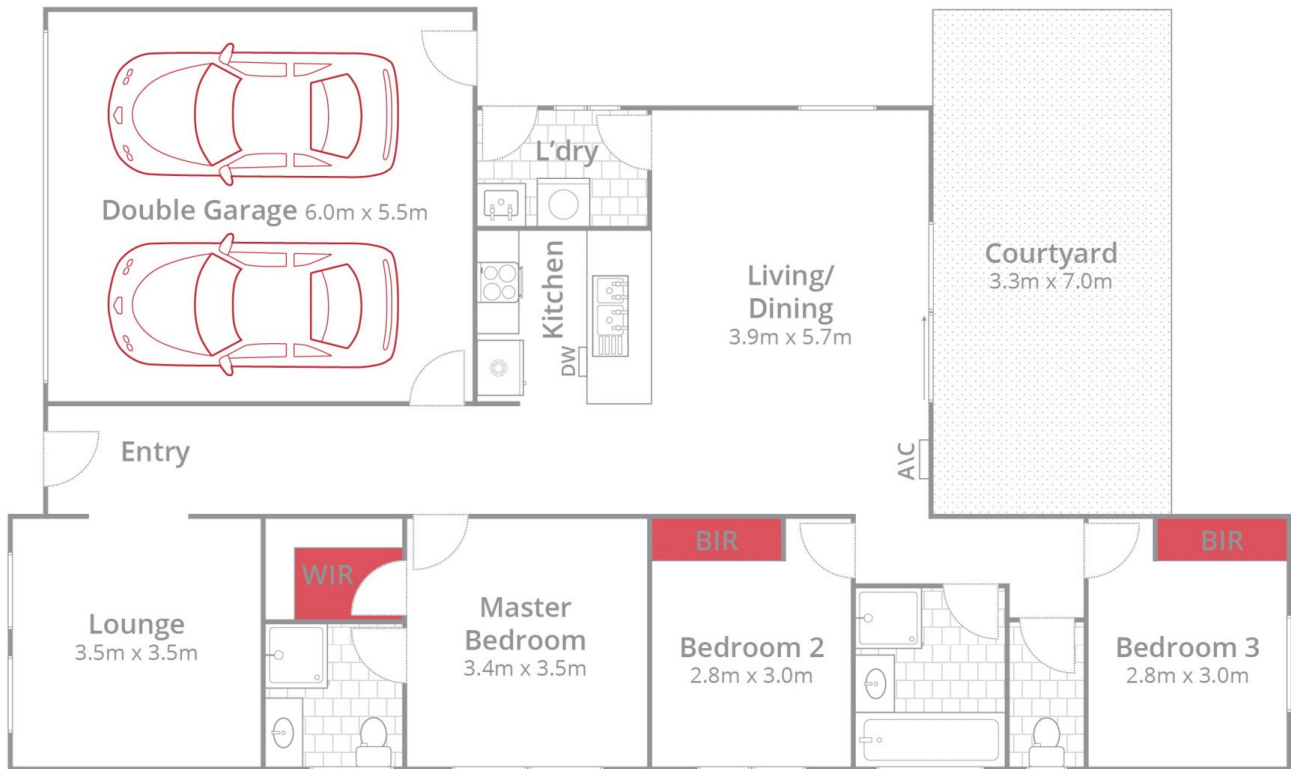
Near new three bedroom quality townhouse is perfectly situated just a short stroll to Minerva Road shopping precinct, close and easy access to public transport and access to the Ring Road.

The property is the front of 2 units, with its own driveway.

Comprises of:

- Large master bedroom with walk-in-robe and ensuite
- Two other bedrooms with built in robes
- Central bathroom with bath and separate shower
- Spacious open plan living/dining/kitchen area featuring stone bench tops, gas appliances, split system
- Front separate lounge room
- Quality carpets throughout
- Gas central heating throughout
- Private enclosed North facing courtyard
- Double lock up garage with internal access
- Fully landscaped gardens

**View :** <https://www.mayfieldrealestate.com.au/lease/vic/geelong-district/herne-hill/residential/townhouse/7333265>



Whilst [bwrn.com.au](http://bwrn.com.au) has made every attempt to ensure the accuracy of the floor plan contained here, measurements are approximate and no responsibility is taken for any error, omission, or mis-statement. This plan is for illustrative purposes only.

**1/11 Ashbourne Street, Herne Hill**

**M**  
**MAYFIELD**  
REAL ESTATE