



257 Heaths Road Werribee VIC

10 🚗

FOR ALL ENQUIRIES AND INSPECTIONS PLEASE CONTACT
ROB FABRETTO ON 0418 377 535

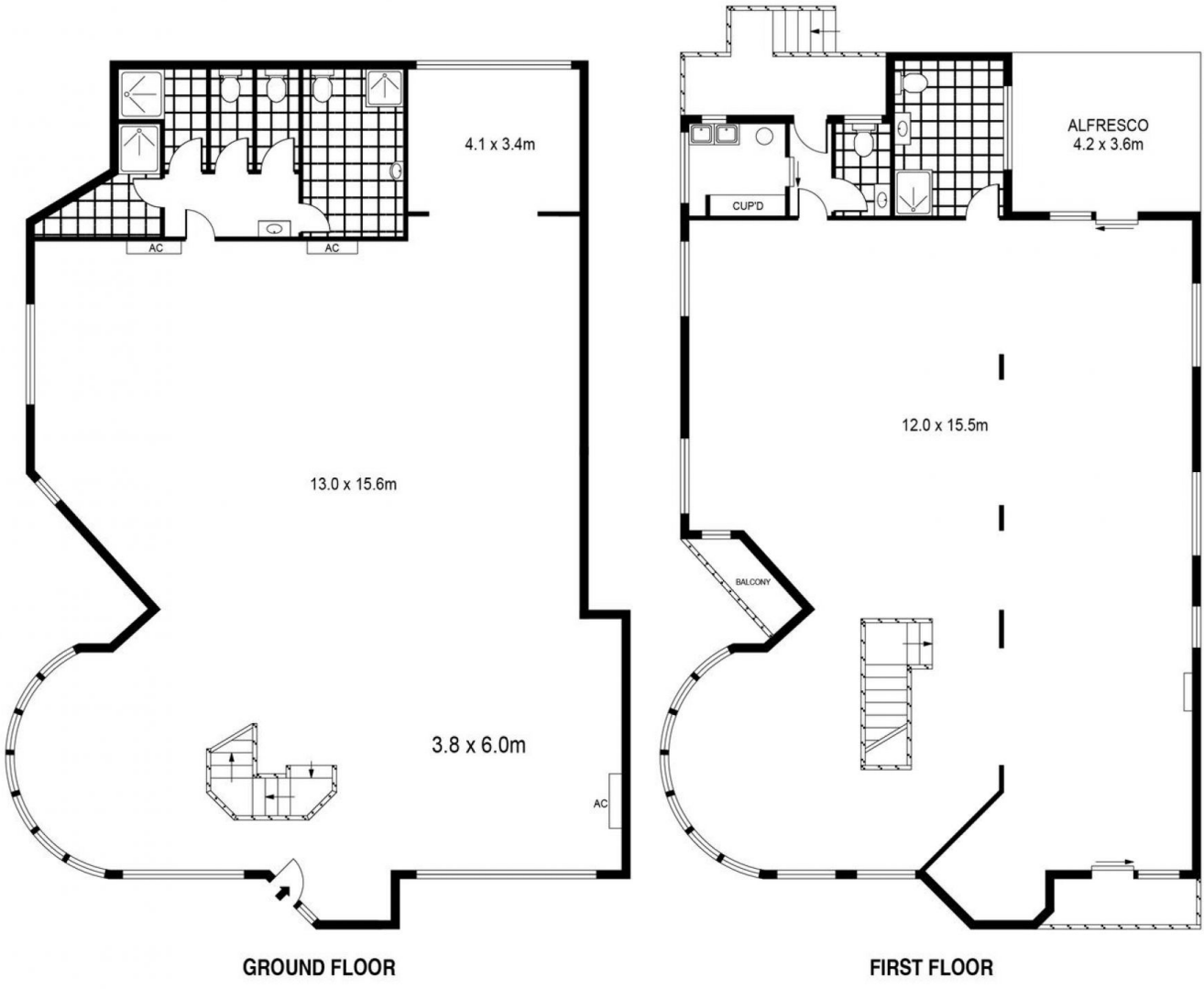
Building Size : 475 sqm
Land Size : 1016 sqm
View : <https://www.mayfieldrealestate.com.au/lease/vic/west/werribee/commercial/healthcare/6905142>

A rare opportunity has been presented to let this high exposure 2 level property located across from the Pacific Werribee Shopping Centre. With maximum exposure of over ten of thousands of cars daily this busy road holds access to all amenities. Featuring a large off street car park and 2 level building this would suit medical or office needs subject to council approvals STCA.

- Property features include:
- Land area: 1016sqm (approx)
 - Potential for multiple office set up
 - Great staff amenities



Mark Mayfield
03 5272 1288



GROUND FLOOR

FIRST FLOOR

NOTE - 10 CAR SPACE + SHARED PARKING



PLANS SHOWN ONLY INDICATIVE OF LAYOUT. DIMENSIONS ARE APPROXIMATE.



257 HEATHS ROAD

WERRIBEE