



### 55 Watsons Road Newcomb VIC

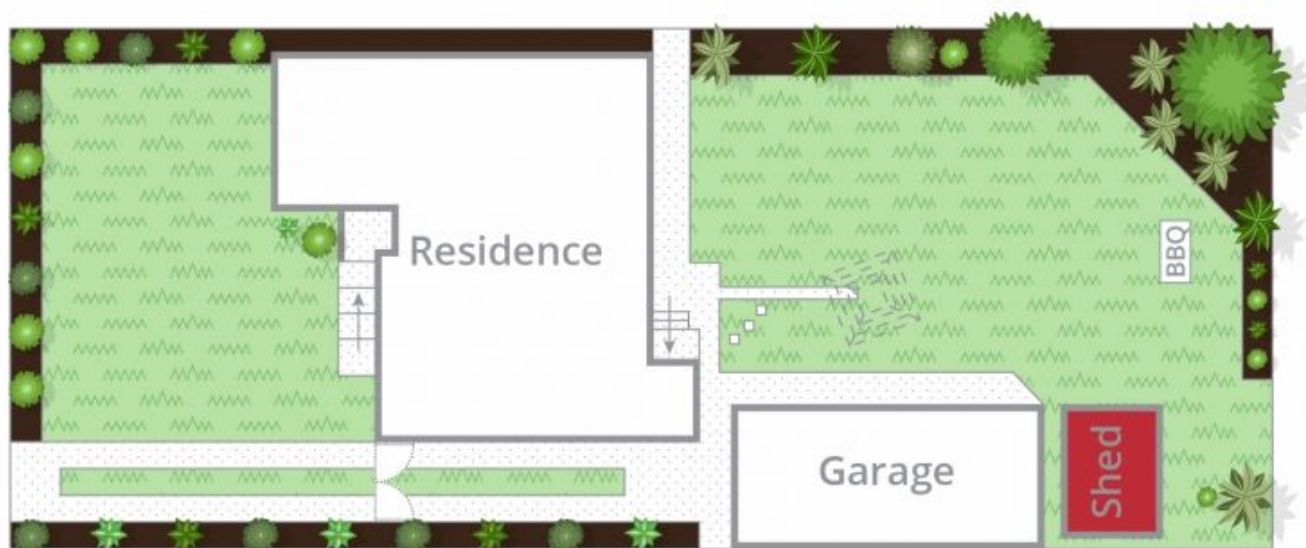
3 1 2

Newcomb is an area that represents value we offer a three bedroom weatherboard home on approx. 628m<sup>2</sup>. A spacious living area flows through to the open plan dining and kitchen area. A central bathroom in neutral tiles and a separate toilet off the laundry completing the interior layout. The large north facing backyard is a blank canvas for an out door entertaining area. Walking distance to local shops and close proximity to public transport with access to Geelong CBD and Eastern Gardens. This property offers owner occupier options, development (Subject to council approval.) or the opportunity to benefit from the current solid rental market.

**Price** : \$ 415,000  
**Land Size** : 628 sqm  
**View** : <https://www.mayfieldrealestate.com.au/sale/vic/geelong-district/newcomb/residential/house/5673014>



**Mark Mayfield**  
 03 5272 1288

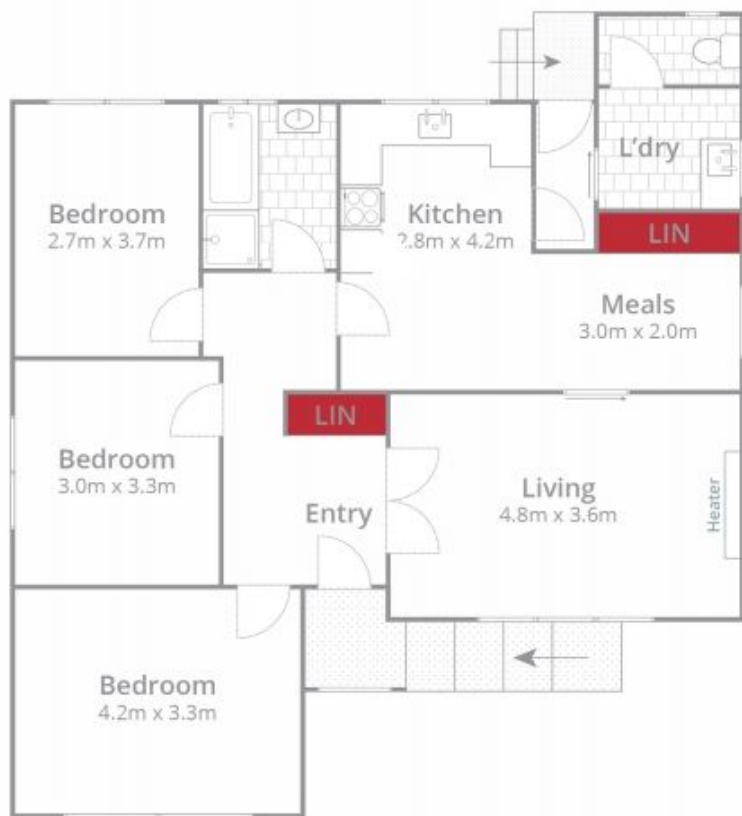


Site Plan

Whilst [bwrn.com.au](http://bwrn.com.au) has made every attempt to ensure the accuracy of the floor plan contained here, measurements are approximate and no responsibility is taken for any error, omission, or mis-statement. This plan is for illustrative purposes only.

**55 Watsons Road, Newcomb**





Ground Floor



(Not In Position)

(Not In Position)

Whilst [bwrn.com.au](http://bwrn.com.au) has made every attempt to ensure the accuracy of the floor plan contained here, measurements are approximate and no responsibility is taken for any error, omission, or mis-statement. This plan is for illustrative purposes only.

55 Watsons Road, Newcomb

*ma*  
mayfield real estate