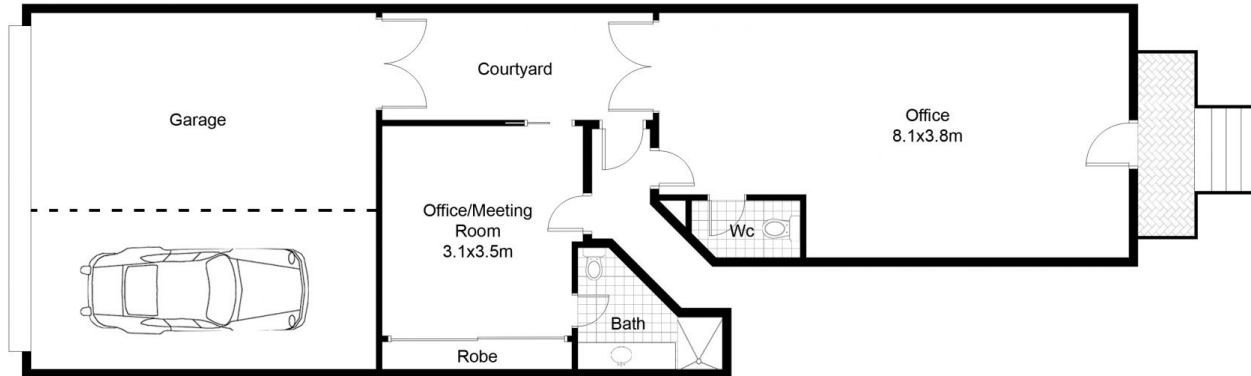


## 2a/242 Ryrie Street Geelong VIC

Here is your opportunity to position your business between the heart of the city and the Geelong Hospital. This ground floor suite offers a good size light filled front office and a private rear office. The suite also offers 2 toilets, a shower and vanity. There is car parking for one car inside the double lock up garage at the rear of the property. The current long term tenant is happy to leave the reception desk and counter, they also have a car parking spot near by that may be available.

**Building Size** : 40 sqm  
**View** : <https://www.mayfieldrealestate.com.au/lease/vic/geelong-district/geelong/commercial/offices/5672952>





This floor plan including furniture, fixture measurements and dimensions are approximate and for illustrative purposes only.  
Boxbrownie.com gives no guarantee, warranty or representation as to the accuracy and layout. All enquiries must be directed to the agent, vendor or party representing this floor plan.

**2a 242 Ryrie St, Geelong**