



44 Oxley Rise Batesford VIC

5 2 2

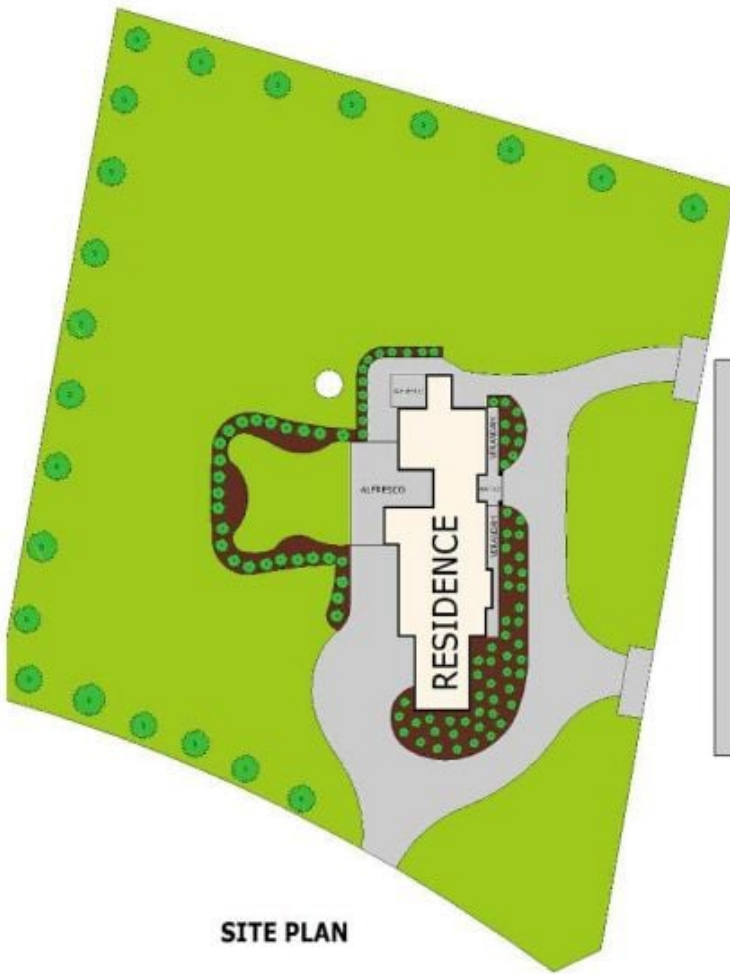
This rural retreat with established grounds presents with post and rail fencing leading to a blue stone lined driveway to the front entry of the home. Step inside and instantly this home will welcome you and what's more will continue to impress at every turn.

Built to the highest standards with exceptional quality fittings throughout sure to satisfy the most discerning buyer. The property comprises 4 generous sized bedrooms the master with ensuite, walk in robe and parents retreat, a dedicated home office and 3 living areas. The stylish kitchen has a large island bench with stone tops perfect for entertaining, stainless steel appliances and ample storage. The adjoining dining area enjoys a pleasant northerly aspect, protected by double glazed windows with a private rural aspect. The spacious bedrooms are serviced by a well appointed full main bathroom. Externally a large timber deck with undercover

Price : \$ 815,000
Land Size : 6000 sqm
View : <https://www.mayfieldrealestate.com.au/sale/vic/geelong-district/batesford/residential/house/5672742>



Mark Mayfield
03 5272 1288



Scale in metres. Indicative only. Dimensions are approximate. All information contained herein is gathered from sources we believe to be reliable. However we cannot guarantee its accuracy and interested parties should rely on their own enquiries.

Residence	- 245 m ²
Garage	- 50 m ²
Verandah	- 26 m ²
Portico	- 9 m ²



44 Oxley Rise, Batesford